

MEDICAL OFFICE SPACE FOR LEASE

**9,500 SF BUILT OUT
MEDICAL SPACE
AVAILABLE**

WHAT MATTERS TO YOU...



LOCATION

STEPS AWAY FROM
NATIONALLY RECOGNIZED
INOVA FAIRFAX HOSPITAL



SIZE

174,000 SF MEDICAL
OFFICE PARK WITH OVER
40 SYNERGISTIC MEDICAL
AND DENTAL PRACTICES



WOODBURN MEDICAL PARK

3299 & 3289 WOODBURN ROAD
ANNANDALE, VIRGINIA 22003

ADDITIONAL FEATURES

- Suites available from 1,200 SF to 9,500 SF
- Abundant garage and surface parking at a ratio of 4 per 1,000 SF leased
- Direct access from the parking garage to multiple floors in the building
- On-site radiology, surgery center, laboratory testing services, deli, and bank
- Gurney size elevators, electronic directories, and operable windows

CONTACT US TODAY

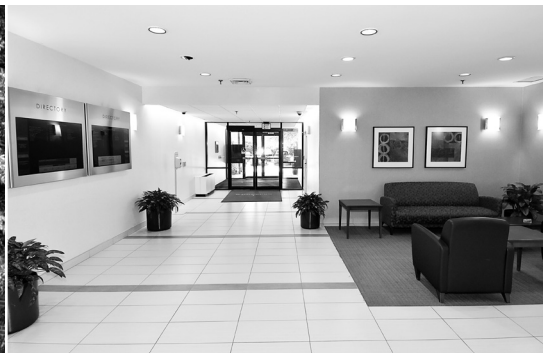
J. WINSTON WILLIAMS, III
WINSTON@GZREALTY.NET

ADRIAN A. DOMINGUEZ
ADRIAN@GZREALTY.NET

PETER G. PAPANTONIOU
PETER@GZREALTY.NET

3 Bethesda Metro Center, Suite 700 // Bethesda, MD 20814
301.961.1941 // gzrealty.net





WOODBURN MEDICAL PARK

3299 & 3289 WOODBURN ROAD
ANNANDALE, VIRGINIA 22003



CONTACT US TODAY

J. WINSTON WILLIAMS, III
WINSTON@GZREALTY.NET

ADRIAN A. DOMINGUEZ
ADRIAN@GZREALTY.NET

PETER G. PAPANTONIOU
PETER@GZREALTY.NET

3 Bethesda Metro Center, Suite 700 // Bethesda, MD 20814
301.961.1941 // gzrealty.net

